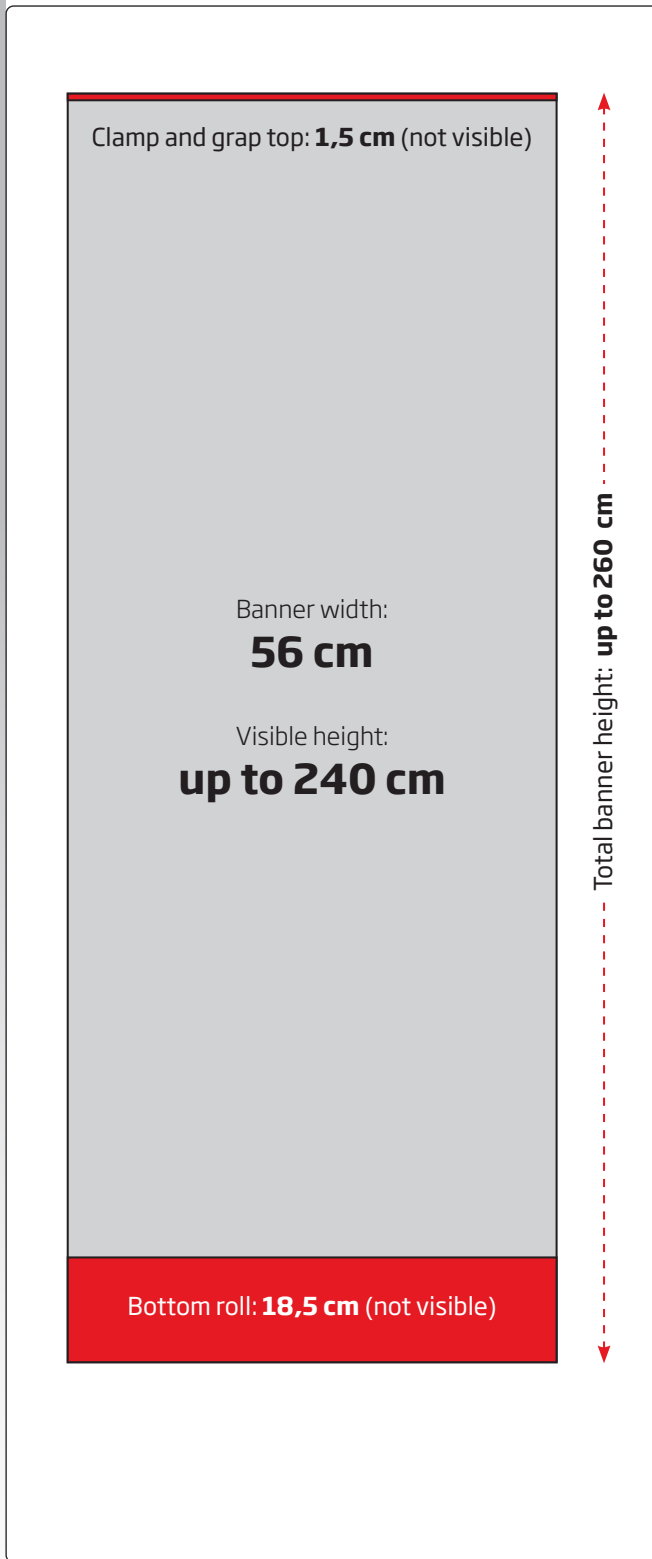




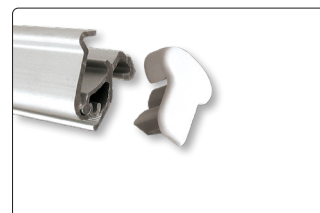
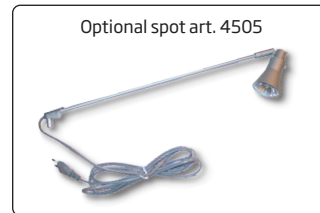
Roll-up with flexible height. Produced in quality silver anodized aluminium. Solid construction and very nice design with adjustable screws under the cassette. Clamp profile in top and strong tape on the bottom roll makes mounting easy. New tape must be mounted when changing the banner. Black luxury bag is included in the price.

Einseitiger Roll-up mit höhenverstellbarer Teleskopstange - aus silber-eloxiertem Aluminium. Kräftige Konstruktion im stilechten Design mit Stellschrauben unter der Kassette. Klemmleiste oben und Klebeband an der Rolle, ermöglicht eine leichte Montage des Banners. Beim Wechseln des Banners muss neues Klebeband an der Rolle montiert werden. Kräftige schwarze Tasche ist im Preis inbegriffen.

Enkelt-sided roll-up med variabel højde - udført i sølv-eloxeret aluminium. Kraftig konstruktion i stilrent design med stilleskrue under kassetten. Topprofil med klemmleiste og kraftig tape på bundrulle gør det let at montere banneret. Ved udskiftning af budskab, skal ny tape monteres på bundrulle. Inkl. kraftig sort luksus taske.

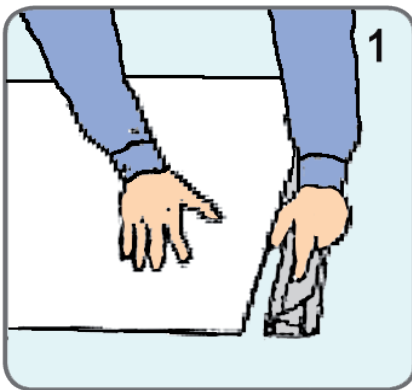


Bannermaterial
We recommend
200-280 g polyester

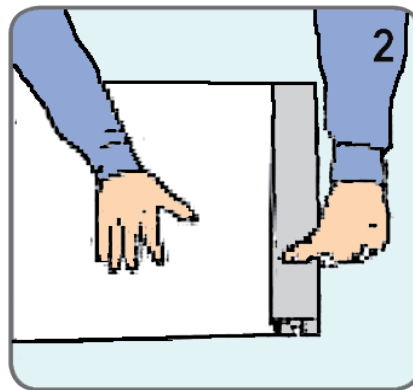


Model	Article	Banner width	Visible banner height	Colour	Total W x H	Package size and weight	Pallet size and quantity
309	4539	56 cm	196 - 240 cm	Alu/silver	63 x 206 - 250 cm	13 x 67 x 25 cm 4,5 kg	80 x 120 x 220 cm 66 pcs.
	4505	Spotlight 50 W		Alu/silver		8 x 7 x 46 cm 0,4 kg	80 x 120 x 220 cm 400 pcs.
	4502	LED spot		Alu/silver	10,5 x 33,5 cm	49 x 15 x 6 cm 0,4 kg	

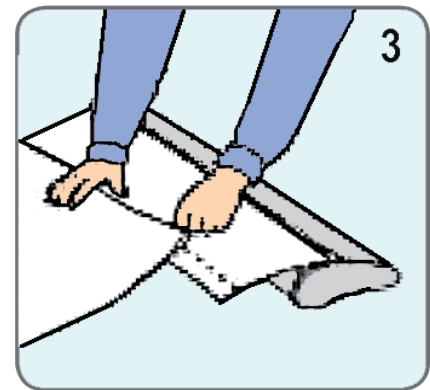
Installation instruction



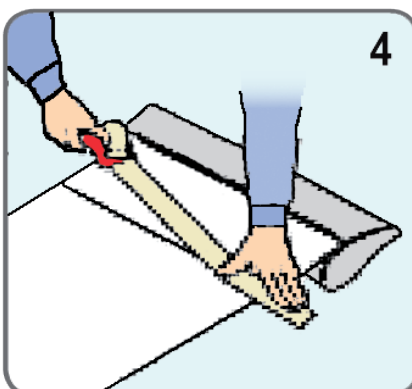
Make the front side of the graphic down on the desk, open the graphic clip to a suitable angle, then insert the top of graphic into the gap. Be sure to make tightly and right in order.



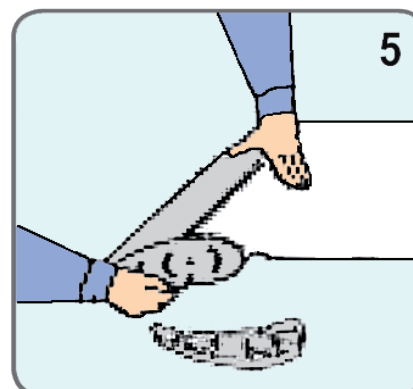
Make the flexible clip back until it is flat. Lock the graphic tightly.



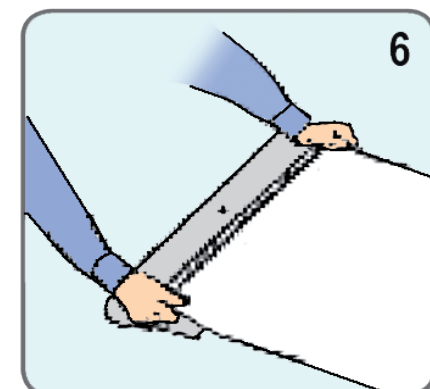
Make the front side of the graphic up and the back of roll-up up, put the leading paper in good place, tear down the double-glue film, make the back of graphic glue to it. **Notice:** When gluing, make it right in line with the black parallel.



Apply the glue tape to the joint between graphic and leading paper, firm it better.



Press the graphic with strength by hand, meantime, press the roll-up body. Pull the graphic out slightly, loose the lock latch and pull it out completely. **Notice:** Avoiding the graphic scrolling instantly.



Loose the hand pressing the graphic, but do not leave the graphic. Make it scroll gradually and adjust it while scrolling until the whole graphic smoothly scrolling in.